

Congratulations

you've arrived in China at
the Great Wall of China



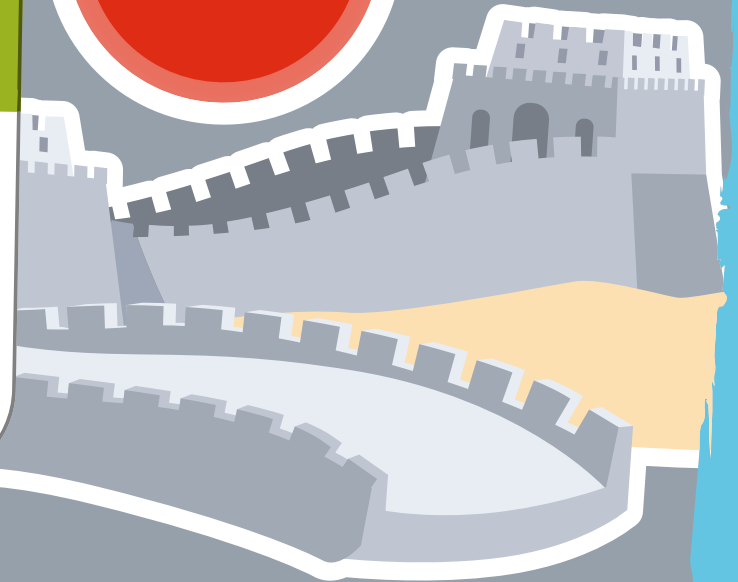
Miles to last/next
destinations

India	2370
Japan	961

Walking time (Days)
to next destination

74

The Daily Mile™ Destinations



China

Great Wall of China



- It was built to protect against attacks and invasions from the north
- The Great Wall of China stretches around 22,000 kilometres (13,670 miles) in total. It is the longest structure ever built by humans
- The wall is actually not a continuous line. It has spurs going in different directions, and breaks where mountains or lakes offer protection

China

Great Wall of China

*Why do you
think the
great wall is
so long?*



China

Great Wall of China

*To protect the
Chinese Empire
from invaders.*

